

Founded in 2016, the Health Insurance Funds are a proven approach that has delivered cost savings to New Jersey towns and schools year after year.

The Fund numbers speak for themselves

112

SCHOOL DISTRICTS IN FUND

4.8 percent

AVERAGE PREMIUM INCREASE
OVER PAST 5 YEARS

\$548,827,000

ANNUAL BUDGET

\$115,537,000

FUND SURPLUS

\$51,300,000

DIVIDENDS

22,032

EMPLOYEES

59,486

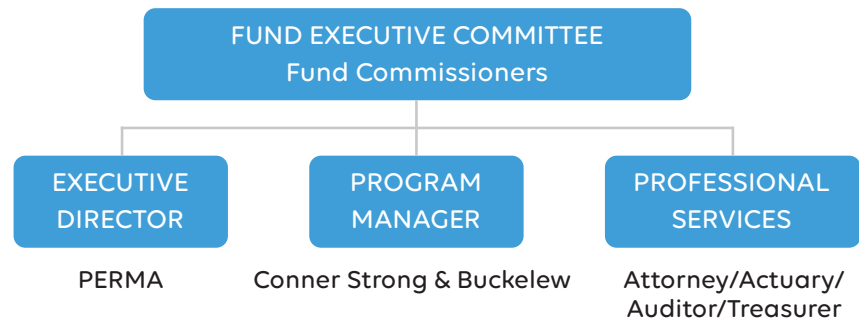
MEMBERS

PROFILE:

Schools Health Insurance Fund

The Schools Health Insurance Fund is available to serve school districts in New Jersey. The Fund contracts with Aetna (medical), AmeriHealth (medical), Horizon OMNIA (medical), Express Scripts (pharmacy) and Delta Dental of NJ (dental).

Like all PERMA Health JIFs, each public entity appoints a Fund Commissioner to represent them. These individuals can have as little or as much involvement in shaping the Fund's overall direction as they choose. Depending on their needs, the Executive Director and Program Manager can manage every aspect of the Fund, from day-to-day functionality to vendor selection to long-range forecasting.



Our Wisdom, Your Advantage

The Schools Health Insurance Fund, like all PERMA Health JIFs, has a proven track-record of fiscal responsibility. The reason is the decision-making process combines our decades of public entity expertise with your needs. Together, the result is a Fund that delivers year-after-year.

You're in Good Company

SCHOOL DISTRICTS

Alexandria Twp. BOE
 Bellmawr Public School District
 Berlin Borough BOE
 Bethlehem Twp. School District
 Black Horse Pike Reg. BOE
 Blairstown BOE
 Bloomsbury BOE
 Bogota BOE
 Burlington Twp. BOE
 Byram Twp. BOE
 Califon BOE
 Chesterfield BOE
 Cinnaminson Twp. BOE
 City of Burlington BOE
 Clayton BOE
 Clearview Reg. BOE
 Clinton BOE
 Collingswood BOE
 Colts Neck Twp. BOE
 Delran Twp. School District
 Delsea Reg. BOE
 Deptford Twp. BOE
 East Greenwich BOE
 Eastern Camden County School District
 Eatontown BOE
 ESC of Morris County
 Ewing Twp. BOE
 Florence Twp. BOE
 Foundation Academy Charter School
 Frankford Twp. BOE
 Franklin Twp. School District
 Fredon Town BOE
 Frelinghuysen Twp. BOE
 Gateway Reg. BOE
 Glassboro BOE
 Glen Ridge Public Schools
 Gloucester City BOE
 Gloucester County Special Services School District
 Gloucester County Vocational School District
 Gloucester Twp. BOE
 Greenwich Twp. BOE
 Hanover Park BOE
 Hardyston Twp. BOE
 Harrison Twp. BOE
 High Point Reg. BOE
 Hope Twp. School District
 Hunterdon Central Reg. HS BOE
 Jamesburg BOE
 Kingsway Reg. School District
 Lawrence Twp. BOE
 Leap Academy University Charter School
 Lebanon Twp. BOE
 Lenape Reg. H.S.
 Lenape Valley Reg. BOE

Lindenwold BOE
 Logan Twp. BOE
 Lower Alloways Creek BOE
 Lumberton Twp. BOE
 Mansfield Twp. BOE
 Mantua Twp. BOE
 Maple Shade BOE
 Medford Lakes BOE
 Medford Twp. BOE
 Mendham Borough School District
 Mendham Twp. BOE
 Middlesex BOE
 Montgomery Township BOE
 Moorestown Twp. Public Schools
 Mount Laurel Twp.
 Mount Holly Twp. BOE
 Newton BOE
 North Hunterdon-Voorhees BOE
 Northern Burlington County Reg. School District
 Oakland BOE
 Ogdensburg Borough School District
 Oxford Central School
 Paulsboro Public Schools
 Pennsauken BOE
 Pinelands Reg. School District
 Pohatcong Twp. BOE
 Ramapo Indian Hills Reg. H.S.
 Rancocas Valley Reg. BOE
 Randolph BOE
 Riverside Twp. BOE
 Robbinsville BOE
 Roxbury Twp. BOE
 Sandyston-Walpack Consolidated School District
 School District of the Chathams
 Shamong Twp. BOE
 Somerset Hills BOE
 South Harrison BOE
 Southampton Twp. BOE
 Springfield Twp. BOE
 Sterling Regional High School
 Stillwater Twp. BOE
 Summit BOE
 Swedesboro Woolwich BOE
 Tabernacle BOE
 Twp. of Franklin Public Schools (GC)
 Upper Pittsgrove BOE
 Voorhees Twp. BOE
 Wallkill Valley Reg. BOE
 Washington Borough BOE
 Watchung Borough BOE
 Watchung Hills Reg. H.S.
 West Deptford BOE
 West Morris Reg. H.S.
 White Twp. BOE
 Woodbury City BOE
 Woodbury Heights BOE
 Woodland Twp. BOE
 Woodstown-Pilesgrove BOE

